



FOR GRADES 6–12

# 6–12 Certified Teaching Services

Certified teachers improve student performance with dynamic curriculum, proactive communication, and live instruction

# Online Teachers, Real-Life Impacts

**Highly qualified educators utilize dynamic curriculum,  
connect with students**

Using standards-aligned courses with an engaging 6–12 curriculum, Imagine Learning's certified instructors can help you expand course offerings, serve more students, address teacher shortages, and more. Certified instructors reteach concepts, provide helpful feedback, and connect with families, schools of record, and school mentors.

## Meet Our Teachers

Our virtual instructors are experienced, certified teachers who establish strong relationships with students just like they would in a physical classroom.

[imaginelearning.click/meet-the-teachers](https://imaginelearning.click/meet-the-teachers)



Meet Our  
Teachers Video





# Built-in layers of support help students maintain momentum

## On-Site Mentor (provided by district)

Implements student engagement strategies and reviews student performance to monitor program progress



## Professional Development

Live, personalized sessions with a Professional Development Specialist — online or in person



## Ongoing Support

Dedicated Customer Success or Regional Administrator is the go-to contact for support and strategy



## Certified Teacher



## Student

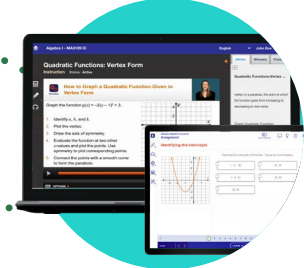


## On-Demand Tutors

Deliver real-time, on-demand, one-on-one tutoring seven days a week in core subjects, test prep, and French and Spanish

## Exceptional Education Coordinator

Works with teachers and schools to make accommodations for students with IEPs and 504 plans



## Curriculum

Engaging, rigorous, state standards-aligned content

# Experienced Instructors Prioritize Student Success

## Imagine Learning teachers are:

### KNOWLEDGEABLE AND EXPERIENCED

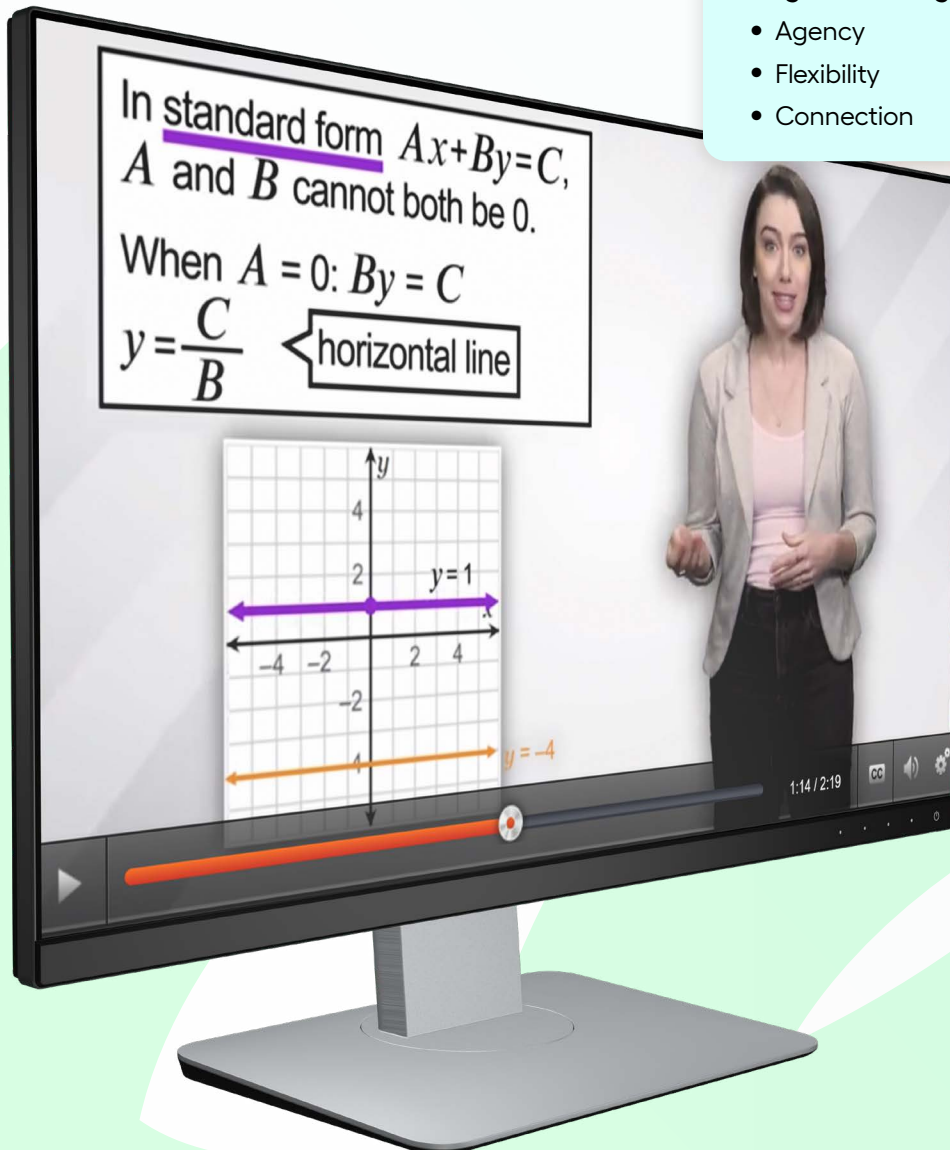
- Highly qualified, state-certified
- Average 17 years of teaching experience
- Trained in best online practices, student and family support, trauma-informed teaching, and cultural sensitivity and awareness

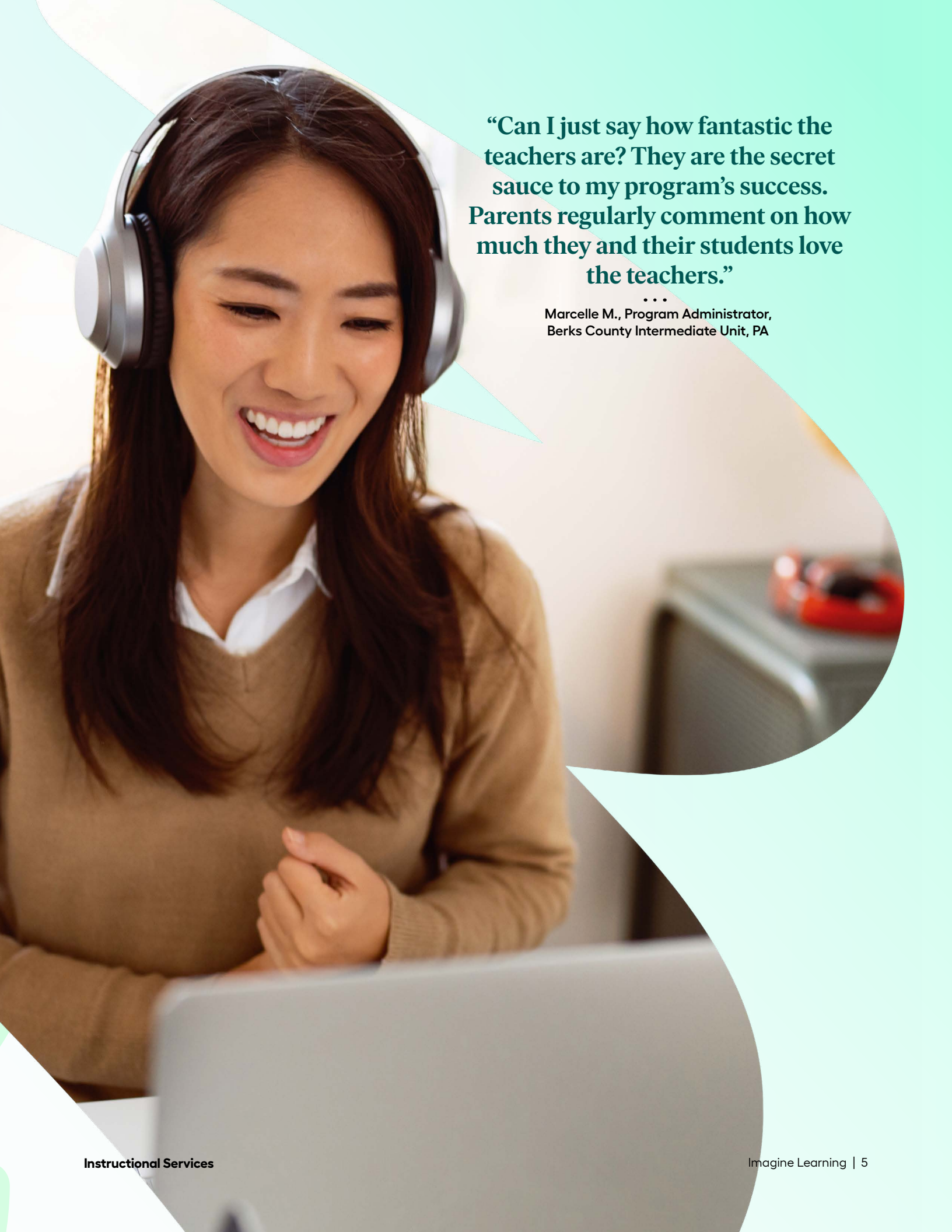
### PROACTIVE AND COMMUNICATIVE

- Keep office hours for 1:1 appointments with students
- Respond via phone or text within one school day
- Grade activities within three school days
- Provide personalized remediation and enrichment
- Offer ongoing progress updates to students, families, and mentors

### Imagine Learning students benefit from:

- Agency
- Flexibility
- Connection





**“Can I just say how fantastic the teachers are? They are the secret sauce to my program’s success. Parents regularly comment on how much they and their students love the teachers.”**

...  
Marcelle M., Program Administrator,  
Berks County Intermediate Unit, PA



# Countless Implementation Options for Limitless Learning

## Accommodate varied needs, personalize learning, fill teacher vacancies

Give students the best of both worlds: live instruction with a state-certified teacher and ample time to complete coursework at their own pace — or mix and match to create the combination of services that works best for your unique situation.

Grade Level	Curriculum Only	Student-Led Learning (asynchronous)	Teacher-Led Instruction with Intelli-Sync
Middle School	✓	✓	✓ (7–8 math/ELA)
High School	✓	✓	✓ (core courses)



## Dynamic, customizable curriculum for initial credit and credit recovery

Imagine Edgenuity® is designed to engage students in grades 6–12 with more than 400 interactive, media-rich courses covering core, electives, world languages, test prep, career and technical education (CTE), and Advanced Placement.



Learn more at [imaginelearning.com/imagine-edgenuity](https://imaginelearning.com/imagine-edgenuity)



# Fill critical gaps and build student-teacher relationships in grades 7–12 with Intelli-Sync

Intelli-Sync™ provides 50 minutes of live teacher-led instruction once a week, as well as synchronous small-group and one-on-one sessions.

**150**

Maximum number of students in each course

**18-36**

Number of weeks our courses can run

**1**

Instructor whose full-time job is teaching the course



## Adapt to evolving needs

With multiple layers of support for students, teachers, and schools, our instructional services provide districts with the people they need to expand opportunities, maintain enrollments, and increase equity.

# imagine school services

### **Instructional Services**

Certified teachers improve student performance with dynamic curriculum, proactive communication, and live instruction options.

### **Tutoring & Intervention Services**

Experienced interventionists deliver small group instruction and subject-matter experts provide on-demand, one-on-one tutoring.

### **Specialized Services**

SPED-certified coordinators, specialists, and speech-language teletherapists help districts support IEPs and 504 plans.



[imaginelearning.com](https://www.imaginelearning.com)

877-725-4257 • [solutions@imaginelearning.com](mailto:solutions@imaginelearning.com)